

BRAKE, TOOLBOXES, CHAINSAWS, FARM RELATED ITEMS
2" Flomax pump; JD AC 3300 power washer; Lincoln Ideal arc 250 welder; Schumacher EZ mig welder; JMA Pro 40 I plasma cutter; Stihl FS108 & FS85 straight-shaft trimmers; Stihl gas blower; Homelite hedge trimmer; jack stands; HD steel sawhorses; Milwaukee hand tools; Porter Cable pancake compressor; DeWalt Englo compressor with Honda eng; new 12.5L-15 tire; Baldor assorted elec. motors; Quincy 1.5 HP compressor; Spectra lazer level; Poulan Pro pole saw; Husqvarna 440 & 55 chainsaws and gas blower; pair 24" hyd cyl; 100' of 1" cable; (20) ripper knives with hardware; ripper parts, points, wear bars, shanks; 25' & 21' fiberglass ladders; large 3 ph 12' shop brake; 2300 watt Dayton generator Wisconsin engine with 7300 watt generator 5.5 HP Honda engine; London fog fogger; propane space heater; NAPA 8-ton cherry picker; clevises, chains, fittings and valves; roller chain; misc. truck parts; hose; sump pump; MS 260 Stihl chainsaw; stack toolboxes and assorted hand tools; Pelco mod PC1520 boiler

SALE ORDER
9:30 start on shop tools and small items, online catalog to start at 10:30 AM with large equipment. You'll like what you see at this auction. Over half of a century of successful farming. Plan to attend or bid online through Proxi or Equipmentfacts. Note: Full detailed catalog online at www.kikoauctions.com with many photos.

ONSITE TERMS
Driver's license or State ID required to register for bidder number. Cash, Check, Debit Card, Visa, or Master Card accepted. 4% buyer's premium on all sales; 4% waived for cash or check when paid sale day. Information is believed to be accurate but not guaranteed. Multi Par auction process may be used.

ONLINE TERMS
Wire transfers or certified check required. 2.5% buyer's premium on all sales. Information is believed to be accurate but not guaranteed. Multi par auction process may be used.

AUCTION BY ORDER OF
Mehrvale Farms. For questions, call farm manager for 50 years, Bo Herman, 330.495.5701 between 9:00 AM-4:00 PM please.



ABSOLUTE AUCTION

SATURDAY, MARCH 7, 2026, 9:30 AM
PREVIEW: FRIDAY, MARCH 6, 2026, 11:00 AM-4:00 PM



FARM
EQUIPMENT



MEHRVALE FARMS (HOWARD BOOHER) COMPLETE DISPERSAL



RANDALL L. KIKO
AUCTIONEER/REALTOR
330.831.0174
randallkiko@kikocompany.com



REALTORS
AUCTIONEERS
ADVISORS

359 TRUMP RD. NE,
HARTVILLE, OH 44632

LIVE AUCTION WITH ONLINE BIDDING ON LARGE ITEMS

- AUCTION HIGHLIGHTS**
- Quality Equipment
 - John Deere Tractors
 - Combine
 - Apache Sprayer
 - Planting & Tillage Equipment
 - Semis, Dump Truck
 - Aluminum Dumps, Detach & Flat Trailers
 - Excavating Equipment
 - Complete Grain Handling Facility
 - Forklift & Chippers



Scan for auction
details, including
directions.

Absolute Auction.
All sells to the
highest bidders
on location.

Information is believed to be
accurate but not guaranteed.
KIKO Auctioneers



www.kikoauctions.com | 800.533.5456



JOHN DEERE TRACTORS, COMBINE, HEADS, APACHE SPRAYER
One-owner 2013 JD 7280R MFWD C/H/A IVT trans 2555 hrs (4) remotes 12 ft. wghts JD Starfire 3000 globe 480/80R46 tires and duals QH; 2017 JD 7250R MFWD C/H/A E23 PS trans 2047 hrs (5) remotes 16 ft. wghts JD Starfire 7000 globe 480/80R50 tires with duals & QH; 2012 JD 7230R MFWD C/H/A 20 sp pwr quad trans 3167 hrs (4) remotes 17 ft wghts JD Starfire 3000 globe 480/80R46 tires with duals & QH; 2015 JD S660 STS combine 4WD 2365 eng hrs 1516 sep hrs 20.8R42 tires with duals set-up for Precision JD Starfire 6000 globe; one-owner 2020 JD 712C 12 RNCH with one-owner Unverth AWS header cart; one-owner 2019 JD 730FD hydra flex Draper 30' head with one-owner Unverth AWS header cart; 2007 Apache AS1010 SP sprayer 1922 hrs 1000 gal 60/80 booms precision spray nozzles self-leveling booms auto steer with ext. planetary gear 380/85R38 ft. tires 380/90R46 rears with ext pair of 520/85R46; pair 380/80R38 tires with 12 bolt rims



PLANTING, TILLAGE, GRAIN CART, CHANDLER & NEW IDEA SPREADERS, APPLICATOR
One-owner 2009 JD 1770NT 12 row liquid corn planter with V drive precision meters Generation 3 precision monitor hyd down force individual shut offs and more nice; 2005 JD 1890 10" X 30 air drill precision seed sense with 2020 seed sense monitor; one-owner 2014 Salford 3124 24' vert. tillage tool with weight kit; one-owner 2016 Unverferth zone builder mod 132 5-shank ripper with spike leveler & Salford rolling basket attachment; one-owner Dalton Ag Products mod DLOHD35 12 row 1300 gal applicator with 180 gal spray tank hyd pump 380/90R46 tires; one-owner Chandler lime/fert. spreader 8/12 ton SS web double spinner tandem axle; one-owner EZ Trail 710 grain cart 1000 PTO with tarp & auger camera 30-5L-32 rubber; New Idea 363 tandem spreader single beater 540 PTO; one-owner Meridian Titan SR2 seed tender with 7 HP motor manual swing auger; Knight 3042 Reel Auggie mixer; Herd 3 pt 1200C PTO broadcaster; QT 84" material bucket; 3 pt 6' box blade; Woods 3 pt 8' York rake; Landpride 12' pull-type hyd. fold finish mower; JD 7 X 12 silage box; steel 7' SS web spreader box



TRUCKS & TRAILERS
1991 Freightliner dump truck dual tandem with 2 drop axles 9 sp Eaton Fuller 700K miles C-10 Cummins 19' East alum dump body 6' sides elec tarp; 2006 mod 379 Peterbilt semi 757K miles Cat C-15 engine 13 sp Eaton Fuller wet line 1200 hrs on eng overhaul; 1993 Freightliner FLD semi 646K miles Cat C-13 9 sp Eaton Fuller trans wet line; 2021 East 39' frameless alum dump trailer Aeroforce power tarp like new; 2015 East Genesis 39' frameless alum dump trailer with Aeroforce elec tarp; 1969 East 30' alum dump trailer; 2000 Wabash 48' deck-over trailer; 1974 Rogers lowboy detach with 20' well with side ext.; 2008 Chevy 2500 HD 4WD Z71 pickup 182K miles 6.0L auto; 2002 Timberwolf 7 X 12 enclosed trailer



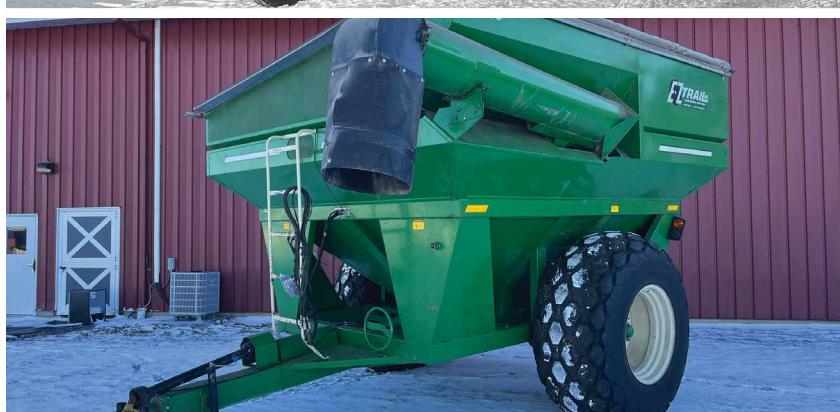
JD GATOR, MOWER, FORKLIFT, VERMEER CHIPPERS, AIR COMPRESSOR
JD 625i gator XUV 4X4 gas 8,027 miles elec dump windshield; JD 757 Z-track zero-turn mower 2845 hrs 60" deck; Vermeer BC1800A auto feed II chipper with 4 cyl Perkins diesel 2865 hrs pull type; Vermeer HG 2000 horizontal chipper with 4 cyl Cummins diesel 15" X 17" hammer mill opening smart feed system 643 hrs; Troy-Bilt 27 ton log splitter; Clark mod C500-Y560 diesel fork lift 6K#; Sullair portable 125 4 cyl diesel eng air compressor



WACONA MIX TANK & LIQUID TANKS
300-gal front mt saddle tank with hyd pump; 3780-gal SS tank with Honda eng & pump; 500-gal SS tank with Honda eng & pump; (2) 12,000-gal alum nitrogen tanks; 1500-gal SS tank with Honda motor & pump; 1500-gal SS tank; (2) 6000-gal heavy wall upright poly tanks; 7500 & 1700-gal cone bottom tanks with stands; 1000-gal flat bottom poly tank with hold down bands; (4) induction tanks 15 & 30 gal; 175-gal poly tank; (2) plastic seed totes; pair flat-bottom 200-gal tanks; Wacona 6-ton granular fert mix tank with 32' conveyor 3 ph motor



COMPLETE GRAIN HANDLING FACILITY, ALL 3 PHASE
One-owner 2007 Brock Superb SQ20D LP quantum dryer 4131 hrs 3 ph 20 HP fan 36" legs with platform 500 BPH with 10 pt moisture removal; one-owner Kwik Kleen 572 grain cleaner 3 ph portable with corn screens; Brock wet bin 45 6000BU with 8" X 25' unloading auger; one-owner 2018 Brock 36' X 20 ring 48K bu bin with 8" Norstar sweep & 15 HP fan; (4) Brock 36' X 10 ring 24,600 bu bin all with fans and power sweeps; Brock 30' X 11 ring 18K bu bin with power sweep & fan; Brock 18' X 9 ring 5K bu bin with 8" X 24' auger & sweep with fan; Circle 30' X 9 ring 15K bu bin with power sweep; 2016 Brock 18' X 8 ring 45' 6000 bu wet bin; overhead structure 18' X 18' with 14' columns with 2 sets of steps; one-owner 2015 Honeyville 16" incline conveyor Mod F161C 5500 BPH cap. 3 ph 10 HP with 4' X 10' hopper with pit cover and 2' X 4' secondary hopper with K-vale; one-owner 2015 Honeyville mod 48-30 bucket elevator 5750 BPH cap with 10" down spouts and 10" 6-hole distributor SS boot 99' discharge height will be dismantled; Browning 8' X 8' X 90' tower with sweet bucket elevator mod Apollo III with 8-hole distribution 93' discharge height with stairs; several feet of 6" pipe; one-owner 2018 Hutchinson 8" grain pump approx. 100' long 4000 BPH capacity; 8" X 39', 8" X 36', 8" X 29', 10" X 23', 6" X 12' & 8" X 38' jump augers; homemade 12' X 8 ring Fines bin; (3) 40 HP roto phase convertors; Share mod 930 moisture tester
Selling For Neighbor: Farm Fans C2125A two burner dryer LP 840 BPH @ 5 pt removal
For questions on the grain facility equipment call Dan Zippay, with Custom Agri Systems, 330.614.4703



EXCAVATOR, DOZER, SCRAPERS, DUMP TRAILERS, DRAG TIE
Kobelco SK160LC excavator 7151 hrs with hyd thumb and aux hyd with WB 42" dirt bucket; selling separate WB 60" ditch bucket, WB 24" dirt bucket; like-new Brushwolf hyd 6600X HD brush cutter 66" fits Kobelco; Stumper 280 HD 24" stump grinder fits Kobelco; 1969 Cat D6C dozer 10' blade rear hitch and ext. hyd 3 sp 6 cyl Cat; East 20' alum self-contained or hyd dump trailer with dolly hitch; Cat mod 60 approx. 8 yd hyd pull type scraper; Cat Mod 40 pull-type 5 yd hyd scraper; pull-type hyd center dump dirt mover; 40' hyd stacker/conveyor; 1956 Unit Dragline with 371 Detroit with approx. 45' boom with bucket been sitting; Ford 7500 loader with counter weight been sitting

